

# 3kHz High Frequency Elastomer Test System

**DYNAMIC SERVO**  
SAGInoMIYA

New  
Release

KCH-701-50

## More Performance

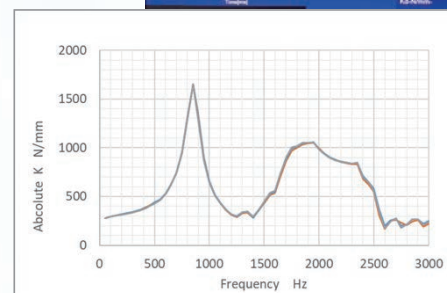
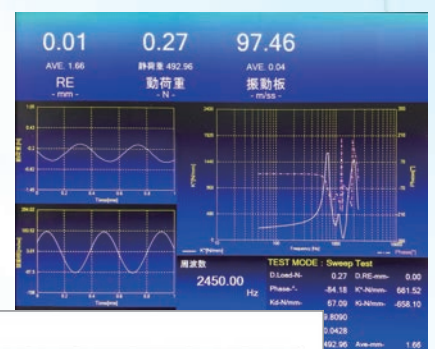
Evolutionary high frequency electro dynamic actuator

## More Capability

Static stiffness test and dynamic test up to 3000Hz

## More Feature

Flexible temperature chamber and other special options



**SAGInoMIYA**

# 3kHz Elastomer Test System

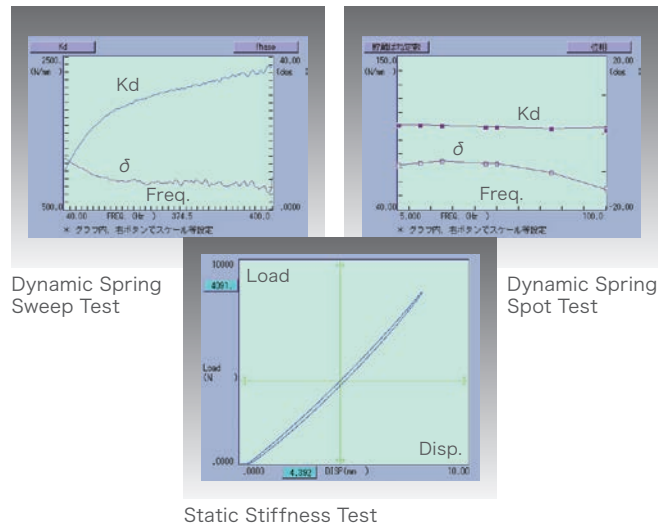
Born with our 40 years of experience as the leading brand of elastomer tester

As vehicle electrification requires higher level of noise and vibration isolation than ever before, verification standards of vehicle rubber products are also getting higher. To verify those products, SAGINOMIYA has released 3kHz elastomer test system. Its original rigid frame, floating mass structure, and unique sensors arrangement performs highly accurate measurement. Operating software includes all our know-how from 40-year experience, which can measure dynamic spring constants, attenuation coefficient, loss tangents needed for elastomer test. Additionally, unique options like flexible temperature chamber / special designed fitting jig are also ready for your specimen. We believe your high frequency test can be supported by SAGINOMIYA.

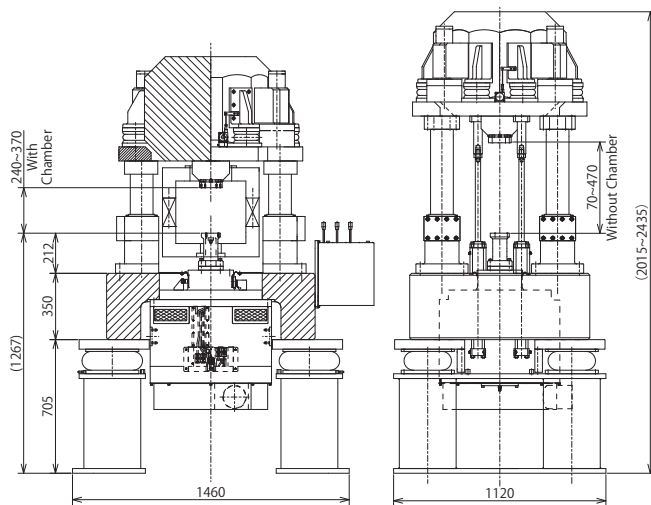
## Specifications

Model	KCH-701-50
Dynamic force	±15kN
Pre-load	0 to 5kN
Max. stroke	±20mm
Max. velocity	1000mm/s
Max. acceleration	700m/s <sup>2</sup>
Frequency range	D.C.5 to 3000Hz
Cross head	Automatic lock up
Total weight	Approx. 6000kg

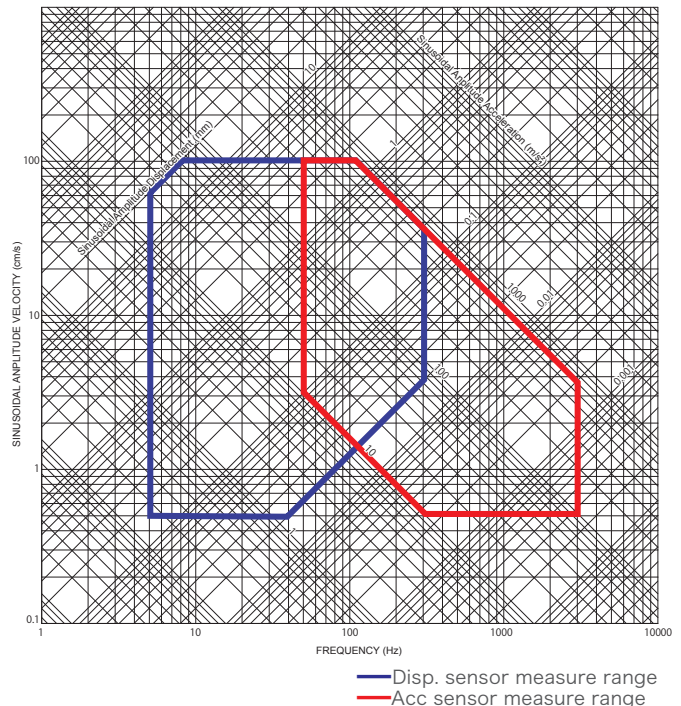
## Test Menu (Example)



## Dimensions



## Performance Curve



**SAGINOMIYA**  
SEISAKUSHO, INC.

<http://www.saginomiya-global.com/en/>

Testing Equipment Tel : +81 3 6205 9126 Fax : +81 3 6205 9127  
Sales Department Shinjuku Garden Tower 22F  
8-2, Okubo 3-chome, Shinjuku-ku, Tokyo, 169-0072 Japan  
E-mail [dynamic-servo@saginomiya.co.jp](mailto:dynamic-servo@saginomiya.co.jp)

Osaka Sales Office Tel : +81 6 6385 8011 Fax : +81 6 6384 0859  
10-28, Hiroshibacho, Suita-shi, Osaka, 564-0052 Japan

Nagoya Sales Office Tel : +81 52 224 7120 Fax : +81 52 224 7121  
1-13, Simizu 4-chome, Kita-ku, Nagoya-shi, Aichi, 462-0844 Japan



### NOTES FOR SAFETY

Failure to read and follow all instruction carefully before installing or operating the product could cause personal injury and/or property damage.

Specifications are subject to change without notice.