

PRESSURE SENSORS / Type XSK



Type XSK-AC**B



Type XSK-AC**I

FEATURES

- Current output (4 to 20mA DC)
- Supports a power supply voltage of 10.5 to 28.0 V.DC.
- Small lot orders available.
- Compatible with a variety of connection types.
(Stainless steel wetted parts are also available.)
- Standards : CE, UL/cUL (Please contact us for details.)

APPLICATIONS

- Packaged air conditioners
- Water boilers
- Water supply pumps
- Chillers, etc.

COMMON SPECIFICATIONS

- Accuracy : $\pm 3\%$ F.S.
(including non-linearity, temperature characteristics, hysteresis, and repeatability)
- Fluid temperature : -20 to 70°C
- Ambient temperature : -20 to 70°C
- Current consumption : 10mA or less
- Fitting materials : Brass, stainless steel
- Fluids : Refrigerant, air, water, oil, inert gas
 - * Please refer to the table on the right for compatible refrigerants.
 - * Not suitable for corrosive fluids.
 - * When using with water, please choose stainless steel connections.
- Absolute pressure type :
1 atmosphere (1013 hPa abs) is set as 0 MPa.
- Enclosure : IP66

Safety group	Compatible refrigerants
A1	R1233zd(E), R407A, R407C, R407F, R407H, R448A, R449A, R449B, R449C, R450A, R452A, R463A-J, R513A, R515B, R507A

• For other refrigerants, please contact us.

DESCRIPTION OF CATALOG NUMBER

*Selecting the following options (II to VI) will determine the catalog number.

XSK - A C 10 B - 107			
I	II	III	IV
Type			
XSK			
Output			
Symbol	Output signal	Power supply voltage	
A	4 to 20 mA DC	10.5 to 28.0 V.DC	
Electrical connector			
Symbol	Electrical connector		
C	Molex connector		
Pressure range			
Symbol	Pressure range		
10	0 to 1.0 MPa		
20	0 to 2.0 MPa		
30	0 to 3.0 MPa		
35	0 to 3.5 MPa		
50	0 to 5.0 MPa		
Connection type			
Symbol	Connection type		
B	1/4" Male flare (comes with a bracket)	107	103
F	1/4" Female flare	211	—
I	1/4" Female flare (with pin)	212	—
M	R1/8"	201	204
	R1/4"	202	205
	R3/8"	203	206
Fitting material (Serial number)			
Brass C3604			
Stainless steel SUS304			

• Weight: Approximately 0.09kg
(not including extension cable and bracket)

*Specifications other than those listed above are also available upon request. Please contact us for details.

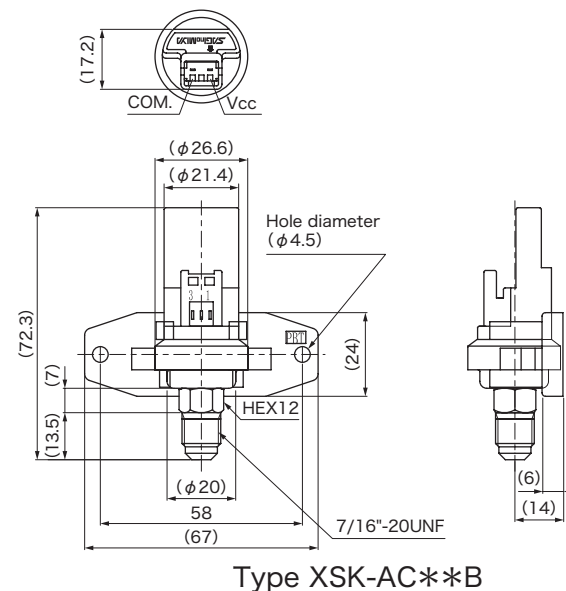
CONNECTION TYPES

B: 1/4" Male flare	F: 1/4" Female flare	I: 1/4" Female flare (with pin)	M: R1/4"

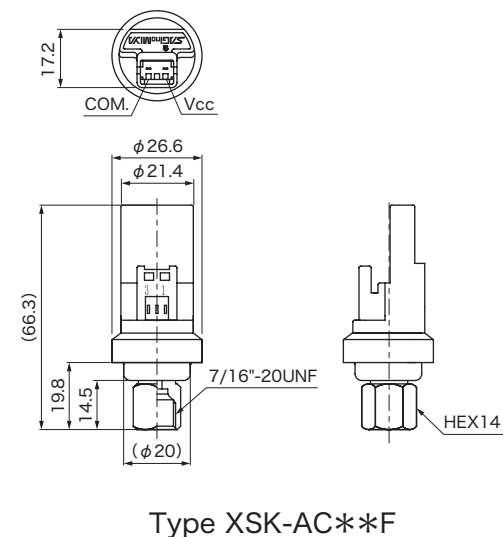
*For connection types other than the above, please contact us.

Unit:mm

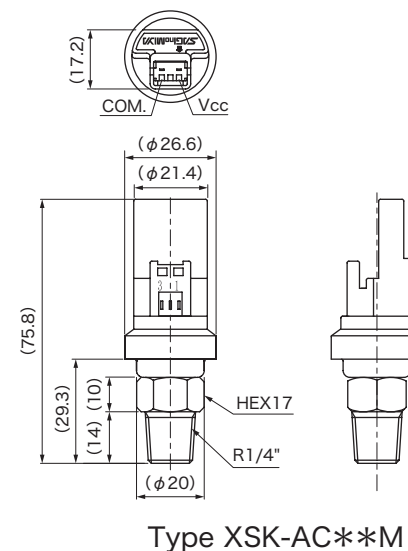
DIMENSIONS / WIRINGS



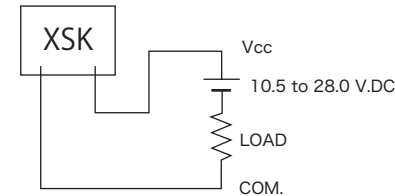
Type XSK-AC**B



Type XSK-AC**F



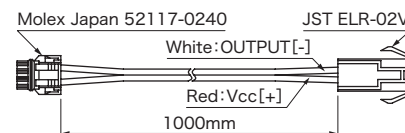
Type XSK-AC**M



Unit:mm

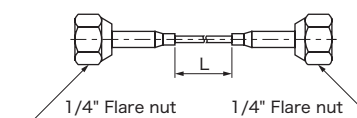
STANDARD ACCESSORIES

- Bracket (For connection type B only)
- Extension cable (1000 mm with electrical connectors)



OPTIONAL PARTS

- Assembled capillary tubes



Part number	L (mm)
SNS-AD01	1000
SNS-AD02	1500
SNS-AD03	2000
SNS-AD06	1000 with pin
SNS-AD07	500
SNS-AD10	500 with pin